

CONTENTS

1. Introduction
2. Security instructions
3. Overview
4. Components
5. Assembling and using your product
6. Cleaning and maintenance
7. Functionality problems
8. Technical data
9. Spare parts
10. Full 2 year warranty

These instructions relate ONLY to the Solar Birdbath Fountain and contain important information for using the product for the first time. Please keep these instructions for later reference. They should always accompany the product in the event of transfer to a new user.

1. INTRODUCTION

Thank you for purchasing the Solar Birdbath Fountain. You have purchased a product that complies with the latest and most up-to-date solar technology available.

This product complies with the European and National Standards. The relevant certificates of conformity are held by Smart Solar.

To preserve these standards and in order to maintain safety you should adhere to the instructions for use detailed in this manual.

2. SECURITY INSTRUCTIONS

In the event of any problems arising or damage occurring as a result of misuse the manufacturers warranty will be deemed cancelled. The manufacturer is not responsible for any claims or damages arising from the misuse of this product. For safety reasons and in order to maintain standards (CE) you are prohibited from altering or changing any component in the Solar Birdbath Fountain.

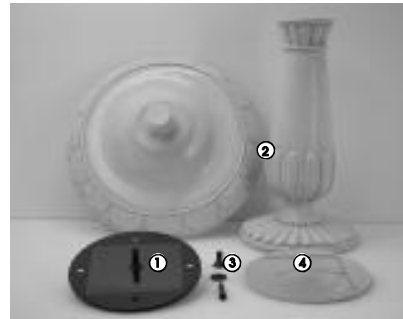
Please follow the instructions very carefully.

For commercial applications due care and attention must be paid to the Health and Safety Standards in your jurisdiction.

3. OVERVIEW

The Solar Birdbath Fountain has been designed for outdoor use. The pump derives its power directly from the integral solar module. In order for the pump to operate, the solar module needs to be placed in direct sunlight. The performance of the pump depends on the season and the position of the Solar Birdbath Fountain solar module.

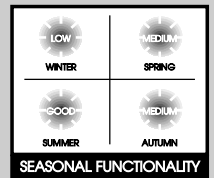
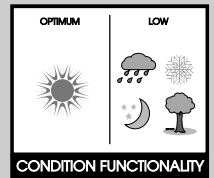
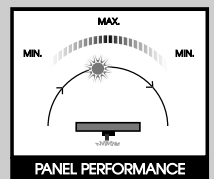
4. COMPONENTS

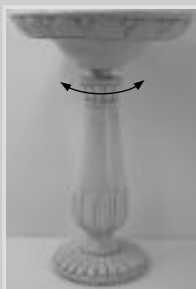


- | | |
|---------------------------------------|--|
| 1 Solar panel with attached pump unit | 3 Fountain head set |
| 2 Resin birdbath top and bottom | 4 Resin plate (for winter/holiday use) |

Warning:

If you are away from home for more than 2-3 days remove the solar pump unit and insert the spare resin plate. The pump must never be operated dry (out of water). Dry operation permanently damages the pump. Please ensure you top-up the water level in the Solar Birdbath Fountain regularly, particularly in hot weather.





Screw top onto bottom

5. ASSEMBLING AND USING YOUR PRODUCT

Unpack all components carefully.

Decide on a suitable location.

Please note:

There will be water splashes when the product is in use. Make sure that the surface on which you are placing the Solar Birdbath Fountain will not be affected.

Screw the top part of the fountain onto the bottom part.

Place the solar pump unit over the central hole in main bowl of the fountain and fill with water.

Please Note:

We recommend you use distilled or rain water to prevent scale building up.

The Solar Birdbath Fountain is now ready to operate.

Please note:

On first use, there may be air in the pump. It can take up to 5 minutes until the air escapes.

6. CLEANING AND MAINTENANCE

If after time the pump starts to lose power or stops working you should check for the build up of sediment or scale in the bottom of the pump housing. Carefully remove the solar pump unit and turn it upside down on a soft surface. Dry the solar pump connector and disconnect.

Remove the pump from the plastic unit and open the pump housing at its base. Remove the impeller and remove any dirt or scale which has built up and close.

Put the unit together in reverse order.

Please note:

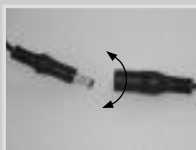
Make sure the underwater connector is absolutely dry before you reconnect it. To ensure the seal remains water-tight you must twist the solar pump connector plugs together rather than merely pressing together.

We recommend you clean the main bowl of the Solar Birdbath Fountain regularly.

The solar module should only be cleaned with soft tissue and proprietary glass cleaning solution.



Turn upside down on a soft surface



Ensure the underwater connector is water tight

7. FUNCTIONALITY PROBLEMS

Pump does not operate even though the solar module is in full sunlight.

- 1) No connection to the solar module - Check the connection.
- 2) Impeller is blocked or filter/pump housing is dirty - Clean the pump.

Pump does operate but there is no water running through the fountain head.

Check for the build up of sediment or scale in the tube or the filter - Clean the tube and the filter.

8. TECHNICAL DATA

Operation voltage:	6.0 V
Solar module:	7.5 V / 1.2 W
Fountain height:	max. 210 l/h
Cable:	15 cm

Important:

In winter the Solar Birdbath Fountain must be stored in a dry and frost-proof environment. The pump must never be operated dry (out of water) Dry operation permanently damages the pump.

Please note:

If you are away from home for more than 2-3 days remove the solar pump unit and insert the spare resin plate.

9. SPARE PARTS

Solar panel and pump holder:	Item No.	2052-01
Pump with tube:	Item No.	2052-02
Fountain head set:	Item No.	2052-03

10. FULL 2 YEAR WARRANTY

If within 24 months from the date of purchase this product fails due to a defect in material or workmanship. Smart Solar will replace or repair it free of charge.

The warranty does not apply to:

Damage caused by accidents, abuse, poor handling, frost or normal wear and tear. Products which have been subject to unauthorized repair or modification.

For further information please contact your nearest service centre detailed on the last page of this instruction manual.



Remove pump base



Clear Impeller